

# Unit 4 Lesson C



## 1 Look at the menu and answer the questions.

| 价目表 jiàmùbiǎo |        |            |             |       |  |
|---------------|--------|------------|-------------|-------|--|
| 馒头 mán.tóu    | ¥3.00  | 可乐 kělè    | 大杯 dà bēi   | ¥6.50 |  |
| 烧饼 shāobǐng   | ¥3.50  |            | 小杯 xiǎo bēi | ¥5.50 |  |
| 面包 miànbāo    | ¥4.50  | 果汁 guǒzhī  | 大杯 dà bēi   | ¥6.80 |  |
| 煎饼 jiānbǐng   | ¥5.50  |            | 小杯 xiǎo bēi | ¥4.80 |  |
| 炸鸡 zháji      | ¥8.00  | 薯条 shǔtiáo | 大 dà        | ¥9.00 |  |
| 馄饨 hún.tún    | ¥10.50 |            | 中 zhōng     | ¥7.00 |  |

1. 两个馒头多少钱? Liǎng-.ge mán.tóu duōshǎo qián?

---

2. 炸鸡、煎饼和面包, 一共多少钱? Zháji, jiānbǐng hé miànbāo, yìgòng duōshǎo qián?

---

3. 一个大杯可乐和一份中薯条, 一共多少钱?

Yì-gè dà bēi kělè hé yí-fèn zhōng shǔtiáo, yìgòng duōshǎo qián?

---

4. 你买一份馄饨和一个馒头, 你给老板(owner)三十块, 他找你多少钱?

Nǐ mǎi yí-fèn hún.tún hé yí-.ge mán.tóu, nǐ gěi lǎobǎn sān.shí kuài, tā yào zhǎo nǐ duōshǎo qián?

---



## 2 Below are the charts showing today's exchange rates between different currencies.

Do the calculation and write down the answers. (Note: you may need a calculator to do the math.)

|    |     |
|----|-----|
| 欧元 | 英镑  |
| 1  | 0.7 |

|     |     |
|-----|-----|
| 人民币 | 新台币 |
| 1   | 5   |

|    |    |
|----|----|
| 日元 | 韩元 |
| 1  | 9  |

|    |     |
|----|-----|
| 美元 | 人民币 |
| 1  | 6.2 |

|    |     |
|----|-----|
| 欧元 | 日元  |
| 1  | 138 |

|     |     |
|-----|-----|
| 人民币 | 港币  |
| 1   | 1.2 |

- 一块美元 yí-kuài Měiyuán = \_\_\_\_\_ 人民币 Rénmínbi
- 五块欧元 wǔ-kuài Ōuyuán = \_\_\_\_\_ 日元 Riyuán
- 十二块港币 shí'èr-kuài Gǎngbì = \_\_\_\_\_ 人民币 Rénmínbi
- 七十块英镑 qīshí-kuài Yīngbàng = \_\_\_\_\_ 欧元 Ōuyuán
- 一百块日元 yībǎi-kuài Rìyuán = \_\_\_\_\_ 韩元 Hányuán
- 一百块人民币 yībǎi-kuài Rénmínbi = \_\_\_\_\_ 新台币 Xīntáibi
- 十块新台币 shí-kuài Xīntáibi = \_\_\_\_\_ 人民币 Rénmínbi
- 五千块日元 wǔqiān-kuài Rìyuán = \_\_\_\_\_ 欧元 Ōuyuán
- From the charts above, can you calculate the exchange rate between 英镑 and 日元?  
一块英镑 yí-kuài Yīngbàng = \_\_\_\_\_ 日元 Riyuán
- From the charts above, can you calculate the exchange rate between 美元 and 新台币?  
一块美元 yí-kuài Měiyuán = \_\_\_\_\_ 新台币 Xīntáibi



## 4 Use 多少 *duōshǎo* to ask questions that correspond to the answers.

1. A: \_\_\_\_\_

B: 我家有十三口人。Wǒ jiā yǒu shí sān-kǒu rén.

2. A: \_\_\_\_\_

B: 这本书一百五十块钱。Zhèi-běn shū yì bǎi wǔ.shí-kuài qián.

3. A: \_\_\_\_\_

B: 三明治和牛奶一共十八块钱。Sānmíngzhì hé niú nǎi yì gòng shí bā-kuài qián.

4. A: \_\_\_\_\_

B: 我今天喝了十四杯水。Wǒ jīntiān hē .le shí sì-bēi shuǐ.

5. A: \_\_\_\_\_

B: 他们买了十五件衣服。Tā.men mǎi .le shí wǔ-jiàn yī.fú.

6. A: \_\_\_\_\_

B: 我的中文课有二十二个学生。

Wǒ.de Zhōngwén kè yǒu èr.shí'èr -.ge xué.shēng.



**5** Four people had food poisoning after they ate in the same restaurant. They don't quite remember what they ordered, so you need to figure out what they ate based on their descriptions and the menu from the restaurant. Fill in what you found out about what each of them ate.

**天天来自助餐厅 Tiān Tiān Lái Zìzhù Cāntīng**

|                      |                   |
|----------------------|-------------------|
| 炸鸡 zháijī ¥8.75      | 馄饨 hùntún ¥12.00  |
| 可乐 kělè ¥4.25        | 包子 bāo.zi ¥3.00   |
| 面包 miànbāo ¥5.25     | 豆浆 dòujiāng ¥4.00 |
| 果汁 guǒzhī ¥6.50      | 馒头 mán.tóu ¥3.00  |
| 三明治 sānmíngzhì ¥5.50 | 牛奶 niú'nǎi ¥4.50  |

A.



我点一杯饮料，我给老板七块，他找我五毛。Wǒ diǎn yī-bēi yǐnliào, wǒ gěi lǎobǎn qī-kuài. tā zhǎo wǒ wǔ-máo.

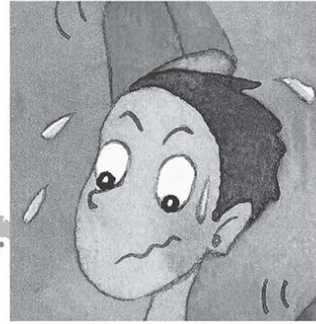
B.



我的一共十三块，我点了吃的东西和一杯可乐。Wǒ.de yí gòng shí sān kuài, wǒ diǎn le chī de dōng xī hé yī bēi kělè.

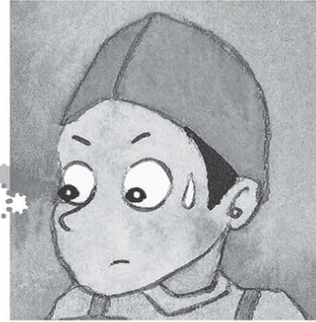
C.

我只点一个中式早餐，十二块。  
*Wǒ zhǐ diǎn yí-ge zhōngshì zǎocān, shí'èr-kuài.*



D.

我买了两种饮料，一共八块五毛。  
*Wǒ mǎi.le liǎng-zhǒng yǐnliào, yígòng bā-kuài wǔ-máo.*



1. A 点什么? A diǎn shén.me?

\_\_\_\_\_

2. B 点什么? B diǎn shén.me?

\_\_\_\_\_

3. C 点什么? C diǎn shén.me?

\_\_\_\_\_

4. D 点什么? D diǎn shén.me?

\_\_\_\_\_



## 6 Decide if the following statements are true or false. Correct any false ones.

1. \_\_\_\_\_ Chinese students usually eat sandwiches for lunch.  
\_\_\_\_\_
2. \_\_\_\_\_ Lunchboxes are often made by packing last night's dinner leftovers into a metallic lunchbox.  
\_\_\_\_\_
3. \_\_\_\_\_ School stores usually open around noon and sell simple lunchboxes or bread and milk. This is also a choice for students to buy lunches.  
\_\_\_\_\_



## 7 Answer the following questions in Pinyin.

1. 你喜欢吃什么早餐? *Nǐ xǐ.huān chī shén.me zǎocān?*  
\_\_\_\_\_
2. 你喜欢喝豆浆还是牛奶? *Nǐ xǐ.huān hē dòujiāng háishì niú'nǎi?*  
\_\_\_\_\_
3. 你有没有人民币? *Nǐ yǒu méiyǒu Rénmínbì?*  
\_\_\_\_\_