

jī

niú

yā

yáng

é

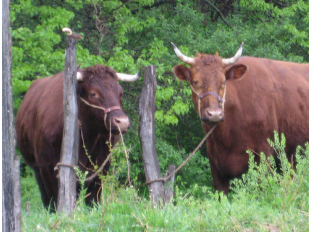
gǒu

yú

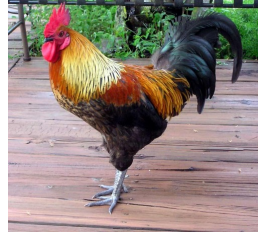
mǎ

zhū

māo



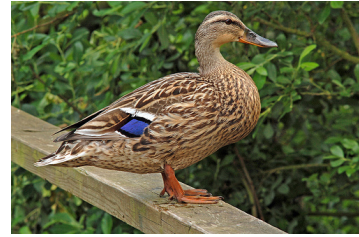
牛



鸡



羊



鸭



狗



鹅



马



鱼



猫



猪

tù zi

dà xiàng

hú li

tiān é

wū guī

láo hǔ

páng xiè

shī zi

hé mǎ

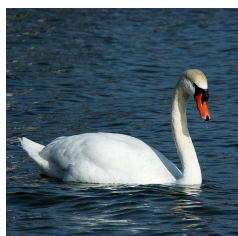
láng



大象



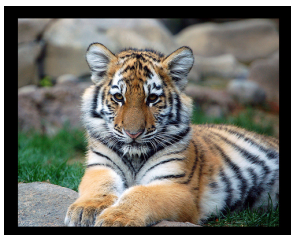
兔子



天鹅



狐狸



老虎



乌龟



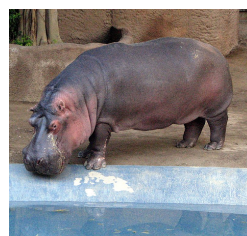
狮子



螃蟹



狼



河马

sōng shǔ

lù

xiáo niáo

láo shǔ

xī niú

shé

cháng jǐng lù

hóu zi

qǐ é



鹿



松鼠



老鼠



小鸟



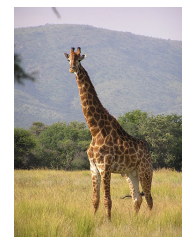
蛇



犀牛



猴子



长颈鹿



企鹅